

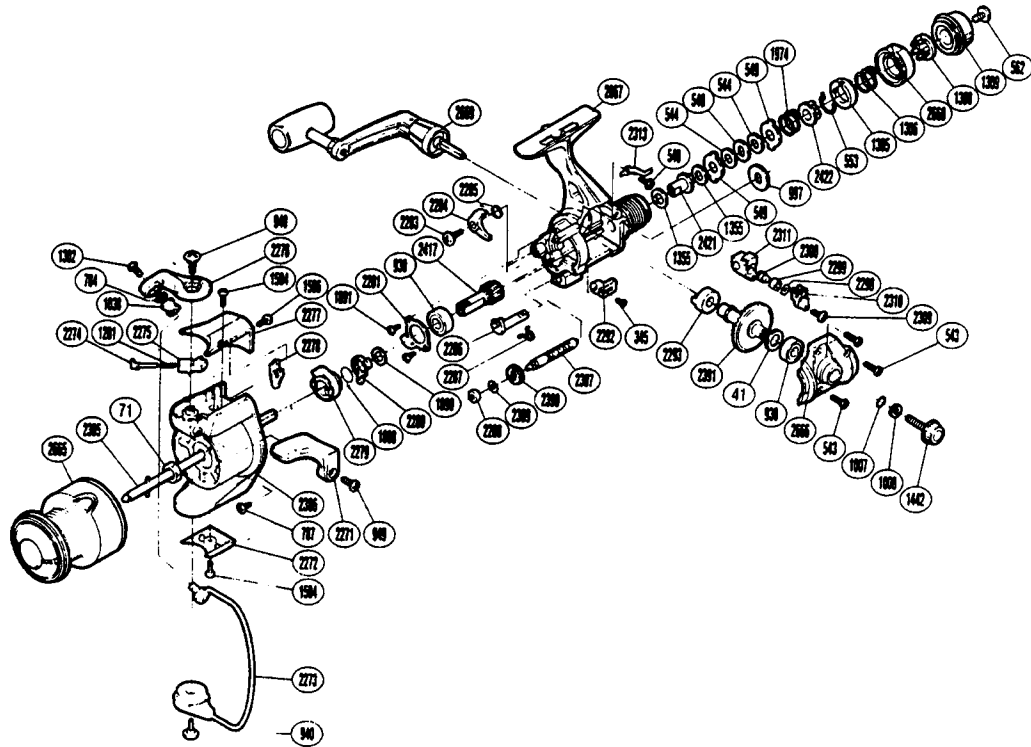
EXPLODED PARTS VIEW

SBA 2-6*

SHIMANO

1990 REPAIR MANUAL

Shimano American Corporation, One Shimano Dr.
Irvine, CA 92718



**TO ORDER: USE RD PREFIX
WITH PART NUMBER**

PARTS LIST

RD #	DESCRIPTION	RD #	DESCRIPTION	RD #	DESCRIPTION
0041	Drive Gear Washer	1355	Drag Washer "C1"	2288	Worm Bearing
0071	Rotor Nut	1442	Handle Screw Cap	2292	Anti-Reverse Lever
0345	Anti-Reverse Lever Screw	1504	Bail Hold Cover Screw	2293	Drive Gear Bushing
0540	Anti-Reverse Pawl Screw	1506	Bail Spring Cover Screw	2298	Spacer
0543	Side Cover Screw [B]	1888	Anti-Reverse Lock Out Spring	2299	Oscillating Slider Bushing
0544	Drag Washer "C2" [White]	1890	Bushing Washer	2300	Oscillating Pawl
0548	Key Washer "A"	1891	Multi Purpose Screw	2305	Main Shaft
0549	Eared Washer "B"	1974	Drag Coil Spring	2307	Worm Shaft
0553	Hold Click Spring	2271	Quick-Fire II Trigger	2309	Slider Retainer Screw
0562	Drag Programmer Screw	2272	Rotor Side Cover	2310	Oscillating Slider Retainer
0784	Line Roller Washer	2273	Bail Assembly	2311	Oscillating Slider
0787	Nut Lock Screw	2274	Bail Spring Guide [A]	2313	Drag Click
0930	Ball Bearing	2275	Bail Spring Guide [B]	2386	Rotor
0940	Bail Trip Cam Screw	2276	Bail Arm	2389	Worm Shaft Spacer
0949	Trigger Screw	2277	Bail Spring Cover	2390	Idle Gear
0997	Click Gear	2278	Bail Trip Lever	2391	Drive Gear
1007	Lock Washer Retainer	2279	Anti-Reverse Ratchet	2417	Pinion Gear
1008	Handle Lock Washer	2280	Anti-Reverse Lock Out	2421	Drag Shaft
1038	Sic Ceramic Roller	2281	Bearing Retainer	2422	Pressure Screw
1201	Bail Spring	2283	Anti-Reverse Pawl Screw	2665	Spool Assembly
1302	Line Roller Screw	2284	Anti-Reverse Pawl	2666	Side Cover
1305	Pre-Set Spring Cover	2285	Anti-Reverse Pawl Spring	2667	Body
1306	Pre-Set Spring	2286	Anti-Reverse Cam	2668	Pre-Set Ring
1308	Pre-Set Cam	2287	Anti-Reverse Cam Spring	2669	Handle Assembly